



THE GOLDEN AGE MEETS
PLATINUM SERVICE.



4507 Brooklyn Ave. NE • Seattle, Washington 98105

Group Sales: 206.658.2375 • Fax: 206.545.2103 • Reservations: 800.899.0251 • Web Site: hoteldeca.com



THE GOOD LIFE IN YOUR NEXT

Relive a sense of style and service from Seattle's roaring Golden Age during your next conference, seminar, lecture, reception, banquet or wedding, catered to by an international team of passionate front-line personnel standing by to exceed expectations.

Minutes from downtown and blocks from the University of Washington, The University District's only full-service luxury boutique hotel mingles 1931-era art-deco architecture with ultra-modern guest and meeting amenities. Let the panoramic city and mountain views serve as your backdrop, and the urban energy right outside the lobby help you create your most successful gathering, ever.

CATHERING.

4507 Brooklyn Ave. NE • Seattle, Washington 98105

Group Sales: 206.658.2375 • Fax: 206.545.2103 • Reservations: 800.899.0251 • Web Site: hoteldeca.com



THE STAGE IS SET.

16 stories tall, and filled with just as many tales, Hotel Deca offers 5,500 square feet and six rooms of flexible meeting space. Guestrooms mix historic flair and modern technology, with 32" flat-panel LCD TVs, DVD players and clock radios with iPod docking stations. And in the wings, you'll find a complete range of services, including: menu planning; catering; program coordination; audio/visual services; a full-service business center and high-speed Internet access.

4507 Brooklyn Ave. NE • Seattle, Washington 98105

Group Sales: 206.658.2375 • Fax: 206.545.2103 • Reservations: 800.899.0251 • Web Site: hoteldeca.com



THE GRAND BALLROOM.
18-FOOT CEILINGS AND HIGHER

Indulge in the opulent elegance and beauty of this marvelously renovated 1931-era space, complete with hand-blown Venetian glass chandeliers and captivating architecture. Accommodates 300 and is ideal for large meetings, dinners, receptions and weddings. Works wonderfully with the Upper Living Room used in a reception and registration capacity.

EXPECTATIONS.

4507 Brooklyn Ave. NE • Seattle, Washington 98105

Group Sales: 206.658.2375 • Fax: 206.545.2103 • Reservations: 800.899.0251 • Web Site: hoteldeca.com



THE CHANCELLOR, COLLEGE REGENT
AND PRESIDENT'S ROOMS. EDUCATED AND

Ranging in size from 550 to 850 square feet, each is several degrees above typical offerings. Ideally suited as breakout rooms during concurrent sessions, or more intimate single-event spaces for medium sized meetings and events, you'll immediately sense a rare and historic character.

ELEVATED.

4507 Brooklyn Ave. NE • Seattle, Washington 98105

Group Sales: 206.658.2375 • Fax: 206.545.2103 • Reservations: 800.899.0251 • Web Site: hoteldeca.com



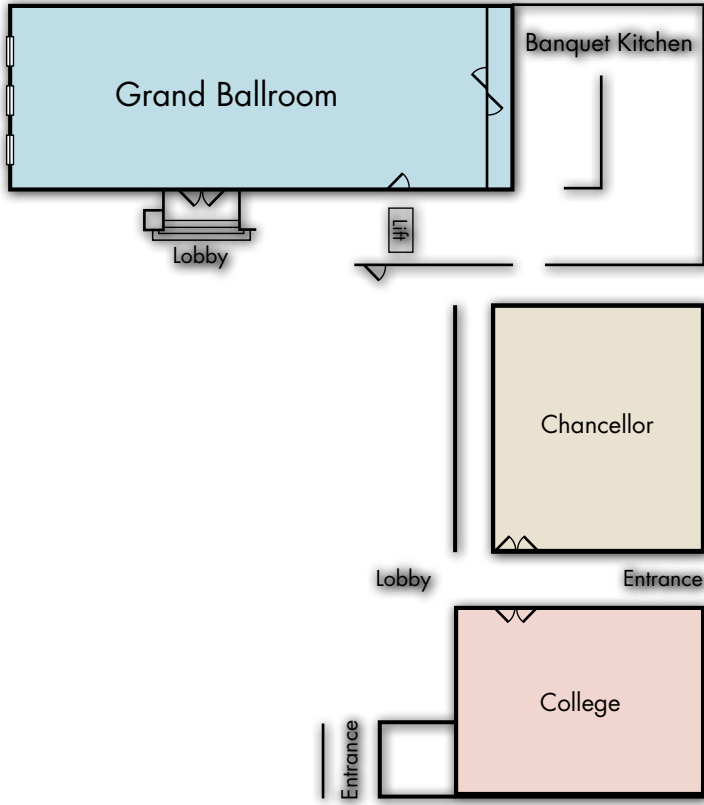
GATHER AROUND THE TABLE, AND MAKE

Truly a power room, this stately setting features seating for 12 around a handsome cherry conference table and ergonomic leather executive chairs. This is the way business was meant to be done. Comfortably. Confidently.

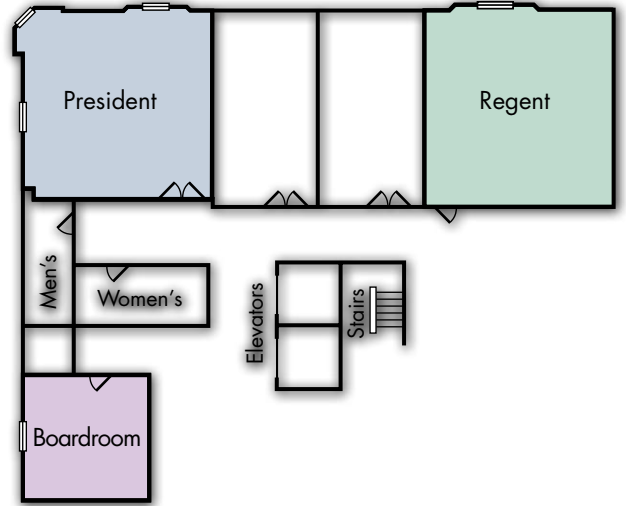
HISTORY.

4507 Brooklyn Ave. NE • Seattle, Washington 98105

Group Sales: 206.658.2375 • Fax: 206.545.2103 • Reservations: 800.899.0251 • Web Site: hoteldeca.com



MEZZANINE LEVEL



LOBBY LEVEL

CAPACITY CHART

Meeting Room	Dimensions	Sq. Footage	Ceiling Ht.	Theater	Classroom	Banquet	Conference	Reception
Grand Ballroom	32' x 75'	2,400	18'	225	110	180	50	300
College	26' x 33'	858	12'	75	30	50	36	75
Chancellor	34' x 25'	850	12'	75	30	50	36	75
President	24' x 24'	576	10'	50	18	30	22	50
Regent	23' x 24'	552	10'	50	18	30	22	50
Boardroom	24' x 12'	288	9'	-	-	-	12	-